

- 1
- 2
- 3
- 4
- 5
- 6
- 7
- 8
- 9
- 10
- 11
- 12
- 13
- 14
- 15
- 16
- 17
- 18
- 19

**VERSIONS**

- Type **A**: without lock nut
- Type **AK**: with lock nut

Version in Steel  
Steel, 1.7225 (42 CrMo 4V) **ST**  
zinc plated, blue passivated

Stainless steel version  
AISI 303 stainless steel **NI**  
(X 10 CrNiS 18-9)

F1: max. total load

F2: max. load after deduction of the max. preload  
- for screws 8.8  $\mu = 0.125$  (Steel version)  
- for screws 6.8  $\mu = 0.14$  (Stainless steel version)

**INFORMATION**

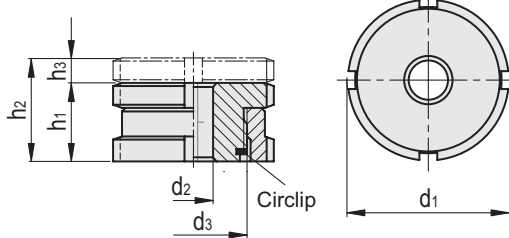
Levelling sets GN 350.1 are used for levelling, adjusting and linking operations if small dimensions are given. They comprise a threaded upper sleeve and a female threaded lower sleeve. The fine thread allows a stepless and precise setting and locking using the C-Spanner DIN 1810. A locking ring serves also as a height limiter for the max. height.

**ACCESSORIES**

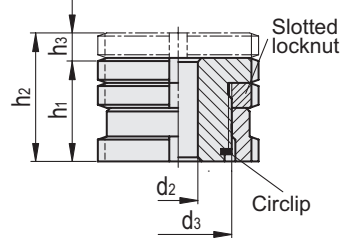
C-Spanner DIN 1810



**GN 350.1-A**



**GN 350.1-AK**



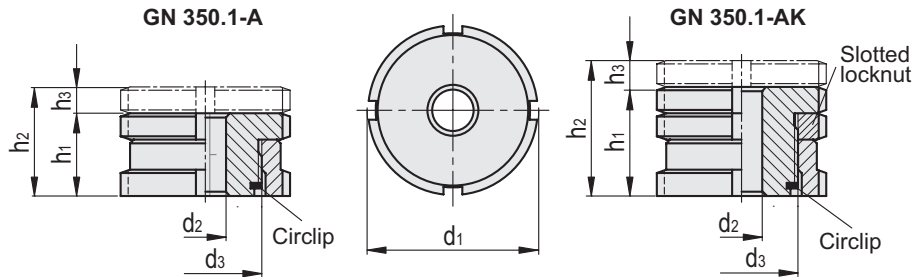
**GN 350.1-A-ST**

Code	Description	d1	d2	d3	h1	h2	h3	Screws	Static load F1 [kN]	Static load F2 [kN]	⚖️
GN.74704	GN 350.1-25-6,6-A-ST	25	6.6	M 15x1	15	19	4	M 6	40	30.7	43
GN.74714	GN 350.1-32-6,6-A-ST	32	6.6	M 20x1	18	23	5	M 6	65	55.7	93
GN.74722	GN 350.1-32-11-A-ST	32	11	M 20x1	18	23	5	M 8	65	48	80
GN.74718	GN 350.1-32-9-A-ST	32	9	M 20x1	18	23	5	M 10	65	37.9	87
GN.74734	GN 350.1-45-11-A-ST	45	11	M 30x1.5	22	29	7	M 10	120	92.9	216
GN.74738	GN 350.1-45-13,5-A-ST	45	13.5	M 30x1.5	22	29	7	M 12	120	80.4	207
GN.74742	GN 350.1-45-17,5-A-ST	45	17.5	M 30x1.5	22	29	7	M 16	120	45.5	188
GN.74754	GN 350.1-58-17,5-A-ST	58	17.5	M 40x1.5	28	37	9	M 16	210	136	450
GN.74758	GN 350.1-58-22-A-ST	58	22	M 40x1.5	28	37	9	M 20	210	90	418
GN.74762	GN 350.1-58-26-A-ST	58	26	M 40x1.5	28	37	9	M 24	210	37	386
GN.74774	GN 350.1-70-22-A-ST	70	22	M 50x1.5	33	43	10	M 20	330	210	788
GN.74778	GN 350.1-70-26-A-ST	70	26	M 50x1.5	33	43	10	M 24	330	157	744
GN.74782	GN 350.1-70-33-A-ST	70	33	M 50x1.5	33	43	10	M 30	330	53	668
GN.74794	GN 350.1-80-26-A-ST	80	26	M 60x2	38	50	12	M 24	495	322	1135
GN.74798	GN 350.1-80-33-A-ST	80	33	M 60x2	38	50	12	M 30	495	218	1060
GN.74802	GN 350.1-80-39-A-ST	80	39	M 60x2	38	50	12	M 36	495	101	965

**GN 350.1-AK-ST**

Code	Description	d1	d2	d3	h1	h2	h3	Screws	Static load F1 [kN]	Static load F2 [kN]	⚖️
GN.74702	GN 350.1-25-6,6-AK-ST	25	6.6	M 15x1	20	24	4	M 6	40	30.7	59
GN.74712	GN 350.1-32-6,6-AK-ST	32	6.6	M 20x1	24	29	5	M 6	65	55.7	128
GN.74720	GN 350.1-32-11-AK-ST	32	11	M 20x1	24	29	5	M 8	65	48	115
GN.74716	GN 350.1-32-9-AK-ST	32	9	M 20x1	24	29	5	M 10	65	37.9	118
GN.74732	GN 350.1-45-11-AK-ST	45	11	M 30x1.5	29	36	7	M 10	120	92.9	300
GN.74736	GN 350.1-45-13,5-AK-ST	45	13.5	M 30x1.5	29	36	7	M 12	120	80.4	209
GN.74740	GN 350.1-45-17,5-AK-ST	45	17.5	M 30x1.5	29	36	7	M 16	120	45.5	289
GN.74752	GN 350.1-58-17,5-AK-ST	58	17.5	M 40x1.5	37	46	9	M 16	210	136	665
GN.74756	GN 350.1-58-22-AK-ST	58	22	M 40x1.5	37	46	9	M 20	210	90	618
GN.74760	GN 350.1-58-26-AK-ST	58	26	M 40x1.5	37	46	9	M 24	210	37	574
GN.74772	GN 350.1-70-22-AK-ST	70	22	M 50x1.5	44	54	10	M 20	330	210	1123
GN.74776	GN 350.1-70-26-AK-ST	70	26	M 50x1.5	44	54	10	M 24	330	157	1069
GN.74780	GN 350.1-70-33-AK-ST	70	33	M 50x1.5	44	54	10	M 30	330	53	974
GN.74792	GN 350.1-80-26-AK-ST	80	26	M 60x2	49	61	12	M 24	495	322	1565
GN.74796	GN 350.1-80-33-AK-ST	80	33	M 60x2	49	61	12	M 30	495	218	1440
GN.74800	GN 350.1-80-39-AK-ST	80	39	M 60x2	49	61	12	M 36	495	101	1315

Standard machine parts



## GN 350.1-A-NI

INOX STAINLESS STEEL

Code	Description	d1	d2	d3	h1	h2	h3	Screws	Static load F1 [kN]	Static load F2 [kN]	⚖️
GN.74703	GN 350.1-25-6,6-A-NI	25	6.6	M 15x1	15	19	4	M 6	27.1	20.2	43
GN.74713	GN 350.1-32-6,6-A-NI	32	6.6	M 20x1	18	23	5	M 6	43.4	36.5	93
GN.74721	GN 350.1-32-11-A-NI	32	11	M 20x1	18	23	5	M 8	43.4	30.8	80
GN.74717	GN 350.1-32-9-A-NI	32	9	M 20x1	18	23	5	M 10	43.4	23.4	87
GN.74733	GN 350.1-45-11-A-NI	45	11	M 30x1.5	22	29	7	M 10	84	64	216
GN.74737	GN 350.1-45-13,5-A-NI	45	13.5	M 30x1.5	22	29	7	M 12	84	54.8	207
GN.74741	GN 350.1-45-17,5-A-NI	45	17.5	M 30x1.5	22	29	7	M 16	84	28.9	188
GN.74753	GN 350.1-58-17,5-A-NI	58	17.5	M 40x1.5	28	37	9	M 16	148	92.9	450
GN.74757	GN 350.1-58-22-A-NI	58	22	M 40x1.5	28	37	9	M 20	148	59	418
GN.74761	GN 350.1-58-26-A-NI	58	26	M 40x1.5	28	37	9	M 24	148	20.3	386
GN.74773	GN 350.1-70-22-A-NI	70	22	M 50x1.5	33	43	10	M 20	225	136	788
GN.74777	GN 350.1-70-26-A-NI	70	26	M 50x1.5	33	43	10	M 24	225	97.3	744
GN.74781	GN 350.1-70-33-A-NI	70	33	M 50x1.5	33	43	10	M 30	225	20.6	668
GN.74793	GN 350.1-80-26-A-NI	80	26	M 60x2	38	50	12	M 24	323	195.3	1135
GN.74797	GN 350.1-80-33-A-NI	80	33	M 60x2	38	50	12	M 30	323	118.6	1060
GN.74801	GN 350.1-80-39-A-NI	80	39	M 60x2	38	50	12	M 36	323	38.2	965

## GN 350.1-AK-NI

Code	Description	d1	d2	d3	h1	h2	h3	Screws	Static load F1 [kN]	Static load F2 [kN]	⚖️
GN.74701	GN 350.1-25-6,6-AK-NI	25	6.6	M 15x1	20	24	4	M 6	27.1	20.2	59
GN.74711	GN 350.1-32-6,6-AK-NI	32	6.6	M 20x1	24	29	5	M 6	43.4	36.5	128
GN.74719	GN 350.1-32-11-AK-NI	32	11	M 20x1	24	29	5	M 8	43.4	30.8	115
GN.74715	GN 350.1-32-9-AK-NI	32	9	M 20x1	24	29	5	M 10	43.4	23.4	118
GN.74731	GN 350.1-45-11-AK-NI	45	11	M 30x1.5	29	36	7	M 10	84	64	300
GN.74735	GN 350.1-45-13,5-AK-NI	45	13.5	M 30x1.5	29	36	7	M 12	84	54.8	209
GN.74739	GN 350.1-45-17,5-AK-NI	45	17.5	M 30x1.5	29	36	7	M 16	84	28.9	289
GN.74751	GN 350.1-58-17,5-AK-NI	58	17.5	M 40x1.5	37	46	9	M 16	148	92.9	665
GN.74755	GN 350.1-58-22-AK-NI	58	22	M 40x1.5	37	46	9	M 20	148	59	618
GN.74759	GN 350.1-58-26-AK-NI	58	26	M 40x1.5	37	46	9	M 24	148	20.3	574
GN.74771	GN 350.1-70-22-AK-NI	70	22	M 50x1.5	44	54	10	M 20	225	136	1123
GN.74775	GN 350.1-70-26-AK-NI	70	26	M 50x1.5	44	54	10	M 24	225	97.3	1069
GN.74779	GN 350.1-70-33-AK-NI	70	33	M 50x1.5	44	54	10	M 30	225	20.6	974
GN.74791	GN 350.1-80-26-AK-NI	80	26	M 60x2	49	61	12	M 24	323	195.3	1565
GN.74795	GN 350.1-80-33-AK-NI	80	33	M 60x2	49	61	12	M 30	323	118.6	1440
GN.74799	GN 350.1-80-39-AK-NI	80	39	M 60x2	49	61	12	M 36	323	38.2	1315

